
About our data downloads

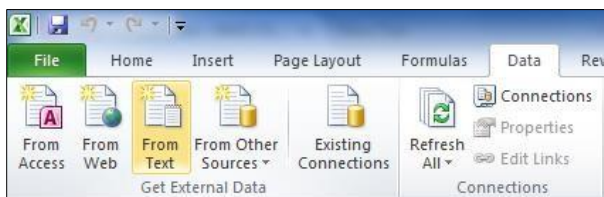
NHS website data downloads are presented as comma-separated values (CSV). To avoid confusion with the many commas that appear in organisation addresses, the separator value we use is the NOT symbol: ¬.

To make use of the data, download the required file to a location on your computer. You can then split the content into separate columns and use a lookup command to find the data you are interested in.

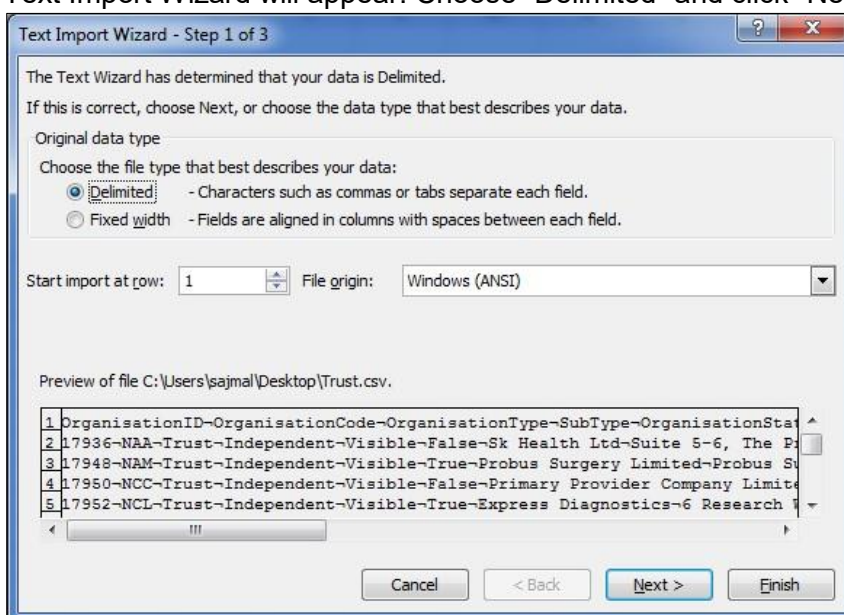
The following information applies to Excel 2010. For help on other versions of Excel, please visit <http://office.microsoft.com/en-gb/support>.

To split delimited content

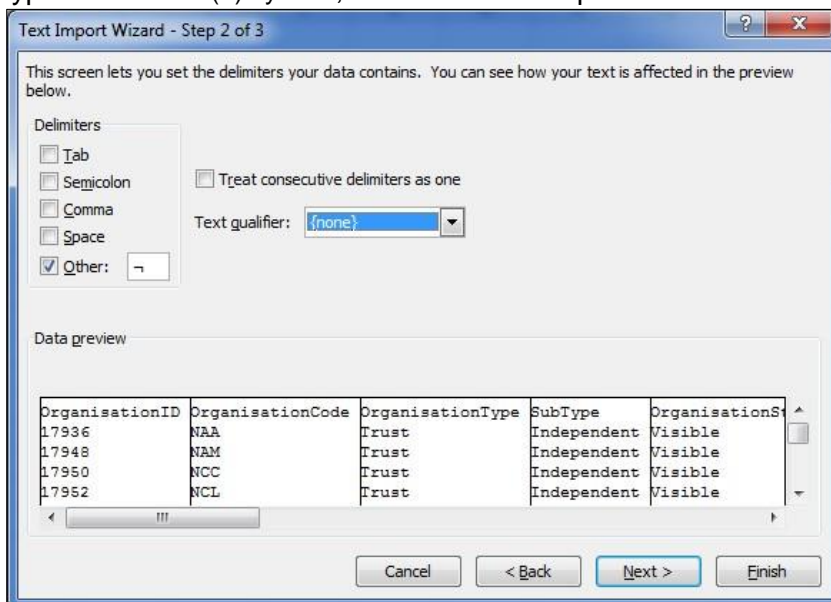
1. Download the desired data from the NHS website.
2. Open Microsoft Excel.
3. Click on the “Data” tab. Under “Get External Data”, click on “From Text”.



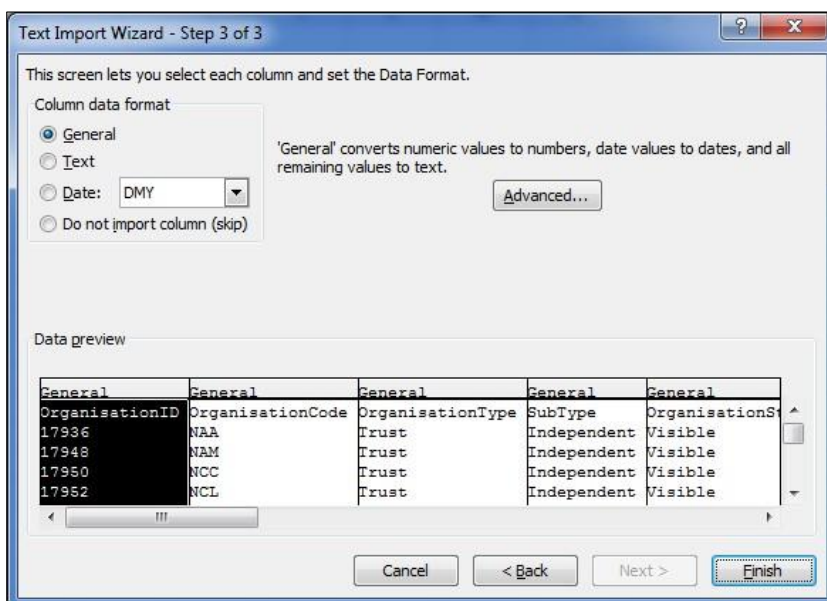
4. Find and select the data you downloaded from step 1 above and click on “Open”.
5. Text Import Wizard will appear. Choose “Delimited” and click “Next” on first screen.



- On step 2 of 3 on the text import wizard, uncheck "Tab Delimiter", select "Other" and type in the NOT (~) symbol, then select Text qualifier as "none" and click "Next".



- Click Finish on the final screen.



- User will be prompted with Import Data notification. Choose the cell to place the data and click "OK".



The formatted data will appear in uniformed columns and rows on Microsoft Excel Sheet.

VLOOKUP

Where data extracts have an identifier in common – for example, the OrganisationID – you can look up data from one spreadsheet and copy it into another. VLOOKUP in Excel looks for a value in the leftmost column of a table, and then returns a value in the same row from a column you specify.

The information below has been obtained from <http://office.microsoft.com/en-gb/excelhelp/vlookup-HP005209335.aspx>:

VLOOKUP (lookup_value,table_array,col_index_num,range_lookup)

Lookup_value The value to search in the first column of the table array. Lookup_value can be a value or a reference. If lookup_value is smaller than the smallest value in the first column of table_array, VLOOKUP returns the #N/A error value.

Table_array Two or more columns of data. Use a reference to a range or a range name. The values in the first column of table_array are the values searched by lookup_value. These values can be text, numbers, or logical values. Uppercase and lowercase text are equivalent.

Col_index_num The column number in table_array from which the matching value must be returned. A col_index_num of 1 returns the value in the first column in table_array; a col_index_num of 2 returns the value in the second column in table_array, and so on. If col_index_num is:

- less than 1, VLOOKUP returns the #VALUE! error value
- greater than the number of columns in table_array, VLOOKUP returns the #REF! error value

Range_lookup A logical value that specifies whether you want VLOOKUP to find an exact match or an approximate match:

- If TRUE or omitted, an exact or approximate match is returned. If an exact match is not found, the next largest value that is less than lookup_value is returned.

The values in the first column of table_array must be placed in ascending sort order; otherwise, VLOOKUP may not give the correct value. You can put the values in ascending order by choosing the **Sort** command from the **Data** menu and selecting **Ascending**.

- If FALSE, VLOOKUP will only find an exact match. In this case, the values in the first column of table_array do not need to be sorted. If there are two or more values in the first column of table_array that match the lookup_value, the first value found is used. If an exact match is not found, the error value #N/A is returned.

©Microsoft

Missing Data

The content offered as CSV downloads is always the latest we have. Because it comes from numerous sources, changes frequently and is supplied to us from local, regional and national levels, there will always be cases where data is incomplete.

Where data is missing so that fields are blank, it could be that the data is not yet available or has not yet been supplied to us.

In the case of individual services, for example, many profiles are updated by local web editors. If the local editor has not, for instance, added an email address, then the email address in the service's CSV file will be blank.

We do, however, go to great lengths to ensure all our data is as complete as possible.

Syndication

Another way of accessing NHS data is through our syndication services, which allow you to pull content from the NHS website via a feed. Any information you syndicate will remain up-to-date, regardless of any changes we make. Visit the [Syndication page](#) for more information.

Additional information

For many of the CSV files you can download, we also provide a PDF giving a description of the file, what it contains, how it is maintained, its code formats and file format.

Those available are listed below and have the same name as the "Download" link to the CSV file – so, for example, the link to "GP services" here will provide the PDF file about the "GP services" CSV file.

Available PDFs:

- [Cardiac surgery performance](#)
- [Care homes with nursing performance](#)
- [Care homes without nursing performance](#)
- [Clinics](#)
- [Dentists](#)
- [GP branches](#)
- [GP practice performance](#)
- [GP opening times](#)
- [GP services](#)
- [GPs' staff](#)
- [Health and wellbeing outcomes](#)
- [Hip replacement performance](#)
- [Hospitals](#)
- [Hospital performance](#)

-
- [IAPT services performance](#)
 - [Integration of health and social care performance](#)
 - [Knee replacement performance](#)
 - [Mental health trusts performance](#)
 - [Opticians](#)
 - [Optician opening times](#)
 - [Pharmacies](#)
 - [Pharmacy opening times](#)
 - [Pharmacy services](#)
 - [Public health service delivery](#)
 - [Social care locations](#)
 - [Social care services](#)
 - [Social care providers](#)
 - [Social care performance](#)
 - [Stroke care performance](#)
 - [Urology performance](#)
 - [Vascular performance](#)